

# GLYDE

*Beautiful in form. Reliable in function.*



# CALME

BOTTOM ROLLING ACOUSTIC SLIDERS



## Key Features

- 50mm Narrow Profile, reducing weight and cavity thickness
- Anti-Slam (brake) System on closing action
- Recessed tracks
- Anti-jump system
- Integrated footbolts
- Designed for SINSW Pattern Book configurations
- 75mm mid-rails (*eliminates requirement for manifestations*)



# CALME BOTTOM ROLLING ACOUSTIC SLIDERS

## Compliance

CSIRO Acoustic Testing	Reports available on request
AS1288 Glazing Standards	
AS1428.1 DDA Compliant	
<i>*Compliance dependent on:</i> <ul style="list-style-type: none"> <li>Rw rating</li> <li>Panel weights</li> <li>Handle locations (through glass or leading stile)</li> <li>Handle type</li> </ul>	

## Hardware Options

Standard 60mm backset lock:	varied key/snib configurations available <i>(Master keying compatibility)</i>
Straight handle: - square or oval profile	600mm centres
Offset handle: - square or oval profile - stile fixing only	600mm centres
<i>*All handles are DDA compliant</i>	
<i>Consult with the GLYDE Team for alternative requirements</i>	

## Configurations

Max. Panel Height:	2700mm
Max. Single Panel Width:	2500mm
<i>*Panel configurations dependent on:</i> <ul style="list-style-type: none"> <li>Rw rating</li> <li>Site access</li> <li>DDA requirements</li> <li>Weight limitations</li> <li>Glass limitations</li> </ul>	

## Floor Tracks

65mm Wide clip-in x 10mm High
20mm Wide x 10mm High

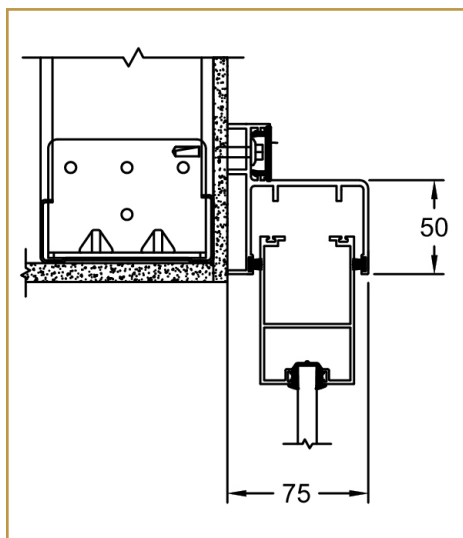
## Acoustic Rating & Panel Weight

Rw35:	29kg/sqm
Rw39:	29kg/sqm

## Section Dimensions

Internal Cavity Dimensions:	90mm - Single Slider 155mm - Dual Slider
Top & Bottom Rail Width:	80mm
Stile Width:	80mm
Stile Depth:	50mm
Surface Mounted Receiving Jamb:	65 +/- 10mm
Corner Mounted Receiving Jamb:	90 +/- 10mm
Fixed Glazing Frames:	50mm width 50mm depth
Midrails:	75mm <i>(can be used in lieu of applied manifestations)</i>
Handle Fixing Options:	75mm Vertical Mullion  80mm Square Plates <i>for fixing of handles through glass</i>

## Head Track: Face Mounted



Compatible with the following substrates

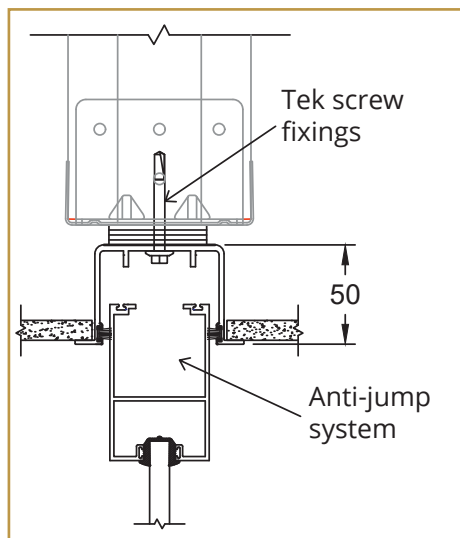
- Steel stud and track framing system (Rondo)
- Timber
- Concrete

Minimal structural requirements due to slider mass being taken by floor.

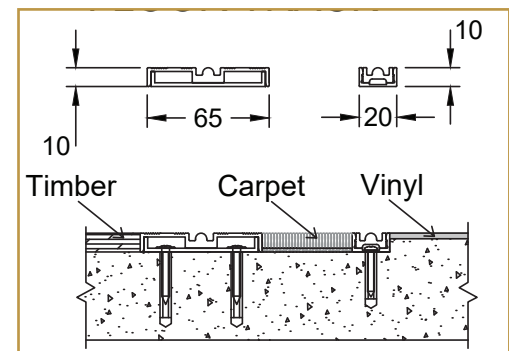
More flexibility with timing of installation.

Integrated Anti-jump device to prevent derailment.

## Head Track: Cavity Mounted



## Floor Track



Floor track compatible with all finished floor types

- Carpet
- Vinyl
- Timber
- Tiles
- Concrete

Can be direct fixed or rebated into substrate

No exposed fixings and anti-slip surface