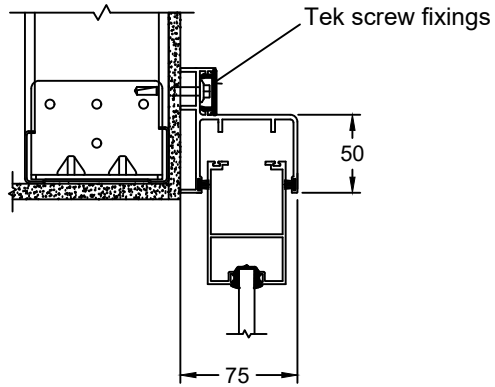
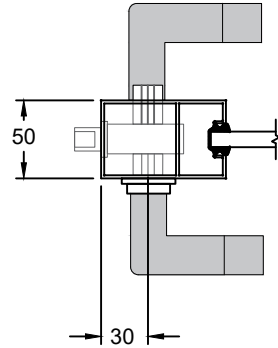


HEAD TRACK

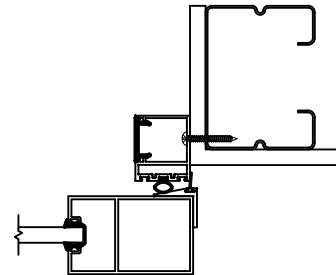
FACE MOUNTED



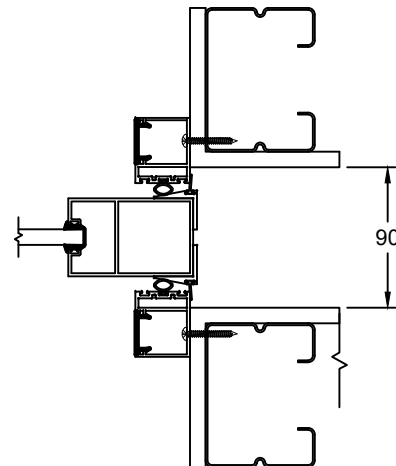
LEAD STILE



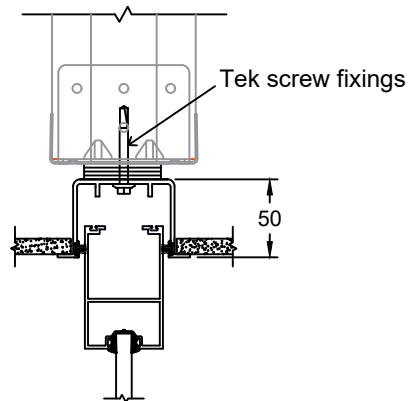
TRAILING STILE - FACE



TRAILING STILE - CAVITY



CAVITY MOUNTED



Compatible with the following substrates

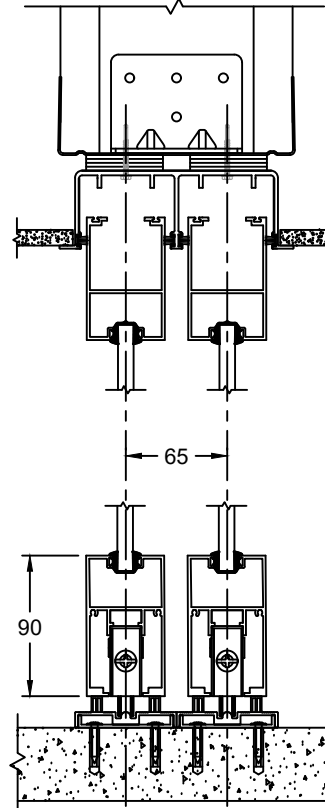
- Steel stud and track framing system (Rondo)
- Timber
- Structural steel
- Concrete

Minimal structural requirements due to slider mass being taken by floor

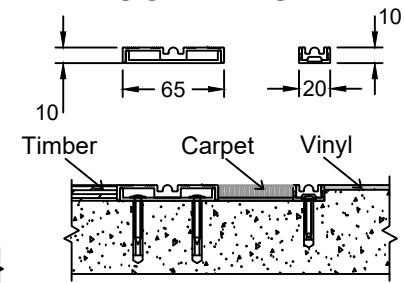
More flexibility with timing of installation

Integrated Anti-jump device to prevent derailment

DUAL SLIDER



FLOOR TRACK



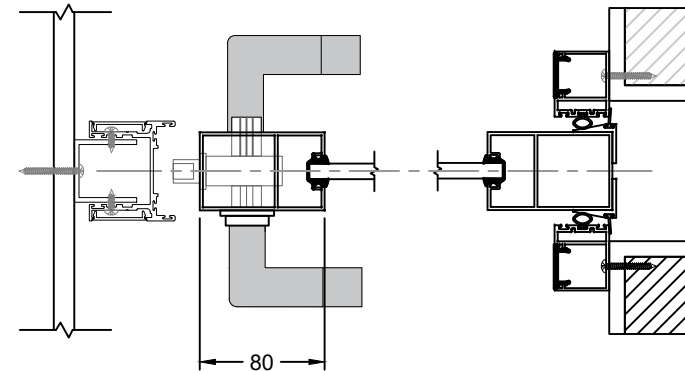
Floor track compatible with all finished floor types

- Carpet
- Vinyl
- Timber
- Tiles
- Concrete

Can be direct fixed or rebated into substrate

No exposed fixings and anti-slip surface

SINGLE SLIDER



DUAL SLIDER CAVITY

